

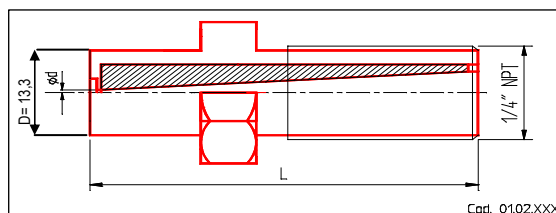
## 01 UGELLI A GETTO TONDO

## (ROUND JET NOZZLE)

Tipo standard per lancia con pistola. Getto di alta qualità.

*Standard type for handheld spray gun. High quality water jet.*

- Hex: SW14.
- Altri diametri ( $d = XXX$ ) a richiesta.  
*Other diameter ( $d = XXX$ ) upon request*



Mat.	P <sub>max</sub> [bar]	L [mm]	Cod.	Diametri (XXX) pronti a magazzino <i>Diameter (XXX)</i>
Inox SS	600	22	01.01.XXX	1.05; 1.30; 1.40; 1.50; 1.70; 1.80; 1.90; 2.10; 2.20; 2.30 [mm]
Inox/tung. SS/Tung	< 1000	28,5	01.02.XXX	0.78; 0.91; 1.09; 1.27; 1.39; 1.57; 1.75; 1.95 [mm] 0.031; 0.036; 0.043; 0.050; 0.055; 0.062; 0.069; 0.077 [inch]

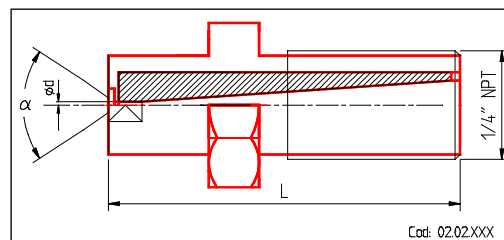
## 02 UGELLI A GETTO PIATTO

## (FLAT JET NOZZLE)

Tipo standard per lancia con pistola. Getto di alta qualità.

*Standard type for handheld spray gun. High quality water jet.*

- Hex: SW14.
- $d =$  diametro equivalente.  
*d = equivalent diameter*
- Altri diametri ( $d = XXX$ ) ed  $\alpha$  a richiesta.  
*Other diameter ( $d = XXX$ ) upon request*



Mat.	P <sub>max</sub> [bar]	$\alpha$	Cod.	Diametri (XXX) pronti a magazzino
inox	600	30°	02.01.XXX	1.10; 1.30; 1.40; 1.55; 1.75; 1.90; 2.10; 2.30; 2.50 [mm]
inox/tung	< 1000	15°	02.02.XXX	1.09; 1.32; 1.57; 1.80; 1.90; 2.36 [mm] 0.043; 0.052; 0.062; 0.071; 0.075; 0.093 [inch]

### 03 INSERTI FILETTATI - GETTO TONDO (THREADED INSERT - ROUND JET)

Inserti in zaffiro industriale o acciaio inox martensitico 1.4034 temprato a 56HRC per aumentarne la durezza e la resistenza all'usura.

- Diametri (d = XXX) a scelta.

(\*) Solo se installati in modo corretto e fissati con Loctite 601.

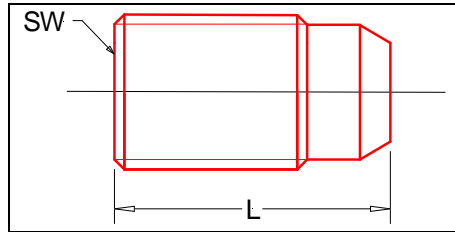
(\*\*) Cod. 03.06 sede in ottone e croce guida-flusso per massima resa.

*Low wear insert jet made with industrial sapphire or special hardened martensitic S.S. (type 1.4034) up to 56 HRC.*

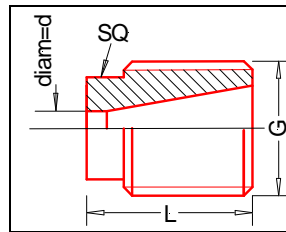
- *Diameter (d = XXX): at choice.*

*(\*) Only if correctly mounted with Loctite 601*

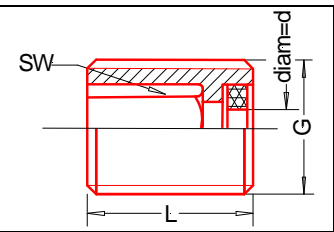
*(\*\*) Cod.03.06 with brass seat and control stream in order to give the maximum efficiency.*



Cod. 03.05 - 03.06 - 03.07



Cod. 03.11 - 03.12 - 03.13



. 03.01 - 03.02 - 03.03 - 03.04

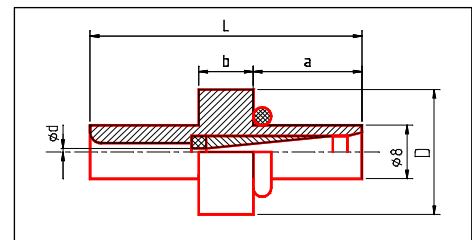
Mat.	P <sub>max</sub> [bar]	G	L [mm]	SW	SQ	d =XXX [mm]	Cod.
zaffiro/ inox	1500 (*)	M3	3	1,5	---	0,10 ÷ 1,00	03.01.XXX
inox	1500 (*)	M3	3	---	2,1	0,30 ÷ 1,30	03.11.XXX
zaffiro/ inox	1500 (*)	M4	4	2	---	0,50 ÷ 1,70	03.02.XXX
inox	1500 (*)	M4	4	---	2,7	0,40 ÷ 1,80	03.12.XXX
inox	1500 (*)	M5	5	---	3,3	0,50 ÷ 2,60	03.13.XXX
zaffiro/ inox	1500 (*)	M6	6	3	---	0,70 ÷ 3,00	03.03.XXX
zaffiro/ inox	1500 (*)	M8x1,25	8	4	---	0,70 ÷ 4,00	03.04.XXX
zaffiro/ inox	2500	M8x1	12	4	---	0,15 ÷ 1,50	03.05.XXX
inox	2500	M8x1	12	4	---	Tappo	03.05.000
inox	2500	M10x1,5	19	5	---	0,20 ÷ 1,20	03.06.XXX (**)
inox	2500	M10x1,5	19	5	---	Tappo	03.06.000
inox	2500	M12x1,5	19	6	---	0,20 ÷ 1,20	03.07.XXX
inox	2500	M12x1,5	19	6	---	Tappo	03.07.000

### 04 UGELLI AD INNESTO IN ZAFFIRO (SAPPHIRE INSERT NOZZLE)

Ugelli a getto tondo di tipo ad innesto per lancia e pistola, in acciaio indurito con piastrina in zaffiro.

*Insert type round jet nozzles for handheld gun. Material: special hardened steel with sapphire insert ring.*

- P<sub>max</sub>: 2500 bar.
- Diametri (d = XXX) a scelta.  
*Diameter (d = XXX) at choice*
- O-Ring (8x2): Cod. 04.00.900
- Anello (12x8x1): Cod. 04.00.901  
*Ring (12x8x1): Cod. 04.00.901*

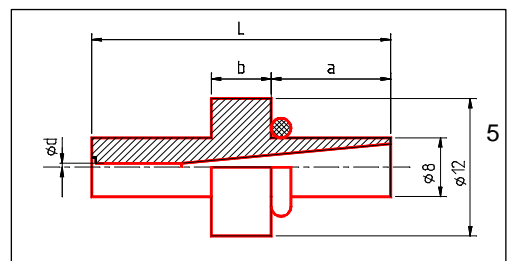


Mat.	P <sub>max</sub> [bar]	D [mm]	L [mm]	a [mm]	b [mm]	d =XXX [mm]	Cod.
zaffiro/ inox	2500	12	24	11,5	3,5	0,10 ÷ 1,00	04.01.XXX
zaffiro/ inox	2500	14	24	9	6	---	04.02.XXX

### 05 UGELLI AD INNESTO - GETTO TONDO (INSERT NOZZLES - ROUND JET)

Tipo ad innesto per lancia e pistola, in acciaio acciaio 1.4034 indurito HRC 56 (DIN 50049/2 e 50049/3.1b).

Rev: 03/10  
Sost.: 09/06



Insert type nozzle for handheld gun. Material: special hardened (HRC56) steel type 1.4034 as per DIN 50049/2 and 50049/3.1b.

- $P_{max}$ : 1500 bar.
- Diametri (d = XXX) a scelta.  
*Diameter (d = XXX) at choice*
- O-Ring (8x2): Cod. 04.00.900
- Anello (12x8x1): Cod. 04.00.901  
*Ring (12x8x1): Cod. 04.00.901*

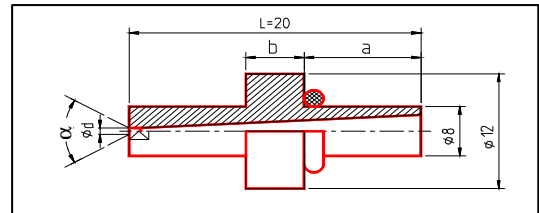
Mat.	$P_{max}$ [bar]	L [mm]	a [mm]	b [mm]	d =XXX [mm]	Cod.
inox	2500	12	4,5	3,0	0,50 ÷ 0,90	05.01.XXX
inox	2500	24	11,5	3,5	0,70 ÷ 4,00	05.02.XXX

## 06 UGELLI AD INNESTO - GETTO PIATTO (INSERT NOZZLES - FLAT JET)

Tipo ad innesto per lancia e pistola, in acciaio acciaio 1.4034 indurito HRC 56 (DIN 50049/2 e 50049/3.1b). Disponibile anche con dispositivo di centraggio (FIX) mediante due piani di riferimento paralleli.

Insert type nozzle for handheld gun. Material: special hardened (HRC56) steel type 1.4034 as per DIN 50049/2 and 50049/3.1b. Available also with two flat surfaces for easier centering.

- $P_{max}$ : 1500 bar.
- Diametri equivalenti (d = XXX) a scelta.  
*Equivalent diameter (d = XXX) at choice*
- Altri diametri ed  $\alpha$  a richiesta.  
*Other diameter and  $\alpha$  upon request*
- O-Ring (8x2): Cod. 04.00.900
- Anello (12x8x1): Cod. 04.00.901  
*Ring (12x8x1): Cod. 04.00.901*



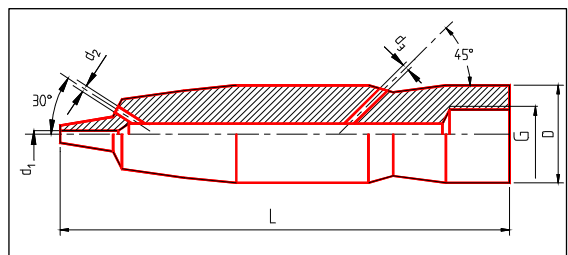
Tipo Type	$\alpha$ [gradi]	L [mm]	a [mm]	b [mm]	D (XXX) pronti a magazzino	Cod.
Senza FIX	15°	20	7,5	3,5	0.90; 1.00; 1.10; 1.20; 1.30; 1.50 [mm]	06.01.XXX
Con FIX	30°				-	06.02.XXX
Con FIX	45°				-	06.03.XXX
Con FIX	15°				-	06.04.XXX

## 07 UGELLI PER LANCIA (LANCE NOZZLES)

Per pulizia tubi di piccolo diametro con lancia rigida, in acciaio speciale indurito (DIN 50049/2 e 50049/3.1b).

For cleaning small diameter pipes with rigid lances. Material: Specially hardened steel as per DIN 50049/2 and 50049/3.1b.

- $P_{max}$ : 800 bar.
- A richiesta altre combinazioni n°fori x diametri.  
*Other diameter and holes number upon request*



D [mm]	G	L [mm]	d <sub>1</sub> [mm]	n° x d <sub>2</sub> [mm]	n° x d <sub>3</sub> [mm]	Cod./Code
12,5	1/8"	56,7	---	3x1	3x1,2	07.01.010
			1,2		3x1,2	07.01.020
					4x1,3	07.01.030
16,2	1/4"	64	---	3x1	3x1,2	07.02.010
			1,2		3x1,2	07.02.020
					4x1,3	07.02.030